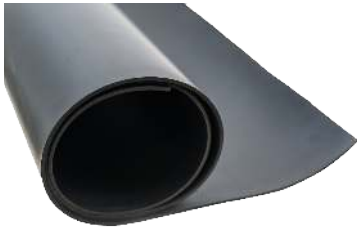




## COMMON SHEET RUBBER MATERIALS



### NEOPRENE

Neoprene is a general purpose rubber known for its high tolerance to hot and cold temperatures, chemical-resistance, excellent sun/UV resistance and oil-resistance. It can be used for gaskets and hoses because it does not degrade easily. It is also waterproof which makes it ideal for weather stripping seals. Available in commercial and industrial grades for a variety of applications.

---



### NITRILE

Nitrile rubber is best suited for petroleum-based products and fuels, offering abrasion-resistance and high tensile strength. It performs well at extreme temperatures, and is commonly used for gaskets, oil seals and many other automotive applications as well as fuel tanks and bladders. FDA grade white Nitrile is widely used in the food and beverage industry.

---



### EPDM

EPDM rubber is best known for its outstanding resistance to elemental exposure including weathering, ozone, and UV ray exposure. It is waterproof and highly recommended as a type of outdoor rubber for applications where there is significant environmental exposure. EPDM rubber is highly resistant to extreme high and low temperatures, making it the ideal rubber material for roofing and insulating heat and electricity.

---



### SBR RED RUBBER

SBR red rubber is a cost-effective, general purpose rubber commonly used in plumbing and gasketing. It conforms easily to uneven flange surfaces and can be used in air, hot and cold water, saturated steam and exterior services.

---



### CLOTH INSERTED RUBBER

There are several types of cloth-inserted rubber materials available, each offering its own unique benefits. Cloth-Inserted rubber consists of an elastomer such as SBR, Neoprene, or Nitrile/Buna-N, impregnated with one or more layers of fabric, usually polyester, nylon, cotton, or fiberglass. The fabric reinforcement significantly increases tear/tensile strength and provides high dimensional stability, while reducing gasket creep in flanged gasket applications with high compression loads.